

Decorative Lavatory Traps

Section Contents

Bottle Traps **231 - 232**

P-Traps **233 - 236**

Lavatory Trap Parts **237 - 238**

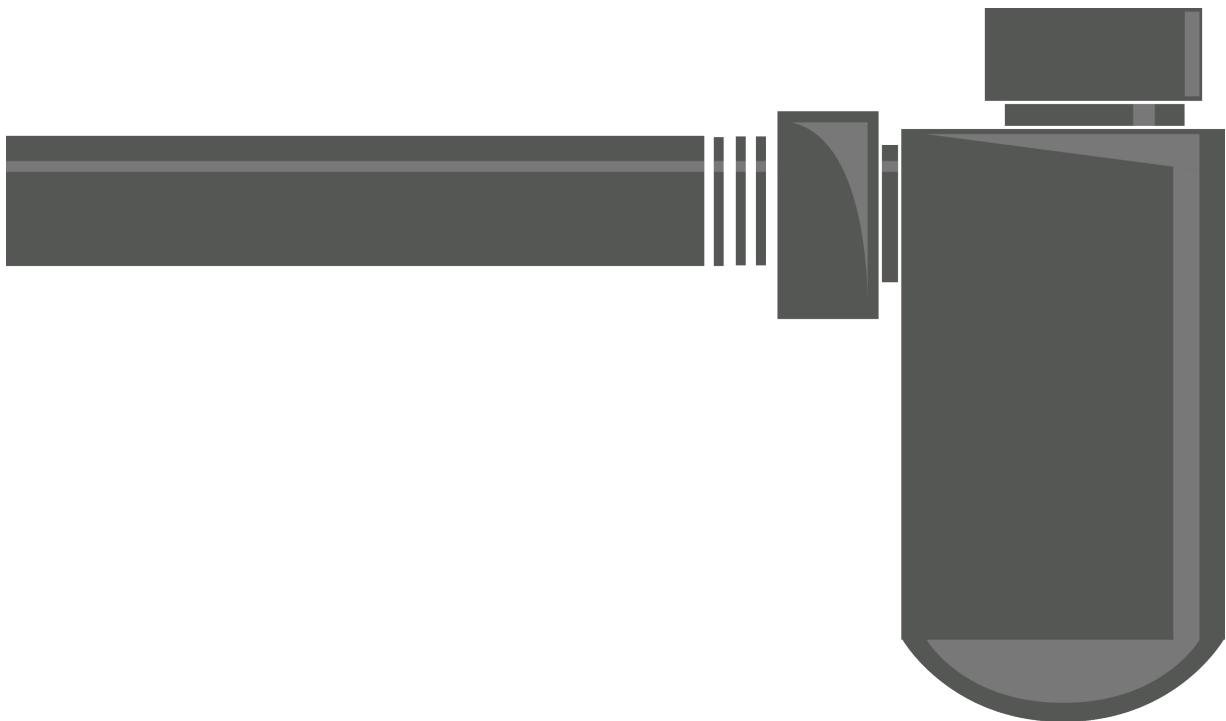
Lavatory Space Saving Trap **238**

Fixture Planning Diagrams

Use the bath sink and pedestal sink fixture planning diagram to simplify your product selection and complete your design.

Bath Sink Fixture Planning Diagram **20**

Pedestal Sink Fixture Planning Diagram **21**



Bottle Traps



Deluxe Decorative Bottle Trap

MT1000

Our traditional style decorative lavatory bottle trap for exposed applications.

- Patented design with a heavy cast brass body
- Fully plated drain with 17 gauge tube
- 1-1/4" x 1-1/4" trap with 9" drain tube
- Includes flange and reducer seal to attach 1-1/4" drain tube to 1-1/2" wall drain
- IAPMO (UPC) Approved

Standard Finishes

MT1000/BRN	Brushed Nickel	\$ 374
MT1000/CHBRZ	Champagne Bronze	\$ 865
MT1000/CPB	Polished Chrome	\$ 316
MT1000/MB	Matte Black	\$ 615
MT1000/ORB	Oil Rubbed Bronze	\$ 550
MT1000/PN	Polished Nickel	\$ 374
MT1000/ULB	Unlacquered Brass	\$ 316
MT1000/VB	Venetian Bronze	\$ 550

Group 1 Finishes

All Group 1 Finishes	\$ 615
----------------------	---------------

Group 2 Finishes

All Group 2 Finishes	\$ 865
----------------------	---------------



Square Style Decorative Bottle Trap

MT3000

Our square style decorative lavatory bottle trap for exposed applications.

- Fully plated drain with 17 gauge tube
- 1-1/4" x 1-1/4" trap with 9" drain tube
- Includes flange and reducer seal to attach 1-1/4" drain tube to 1-1/2" wall drain
- IAPMO (UPC) Approved
- This the first square bottle trap to be approved in the USA

Standard Finishes

MT3000/BRN	Brushed Nickel	\$ 507
MT3000/CHBRZ	Champagne Bronze	\$ 911
MT3000/CPB	Polished Chrome	\$ 424
MT3000/MB	Matte Black	\$ 650
MT3000/ORB	Oil Rubbed Bronze	\$ 610
MT3000/PN	Polished Nickel	\$ 507
MT3000/ULB	Unlacquered Brass	\$ 424
MT3000/VB	Venetian Bronze	\$ 610

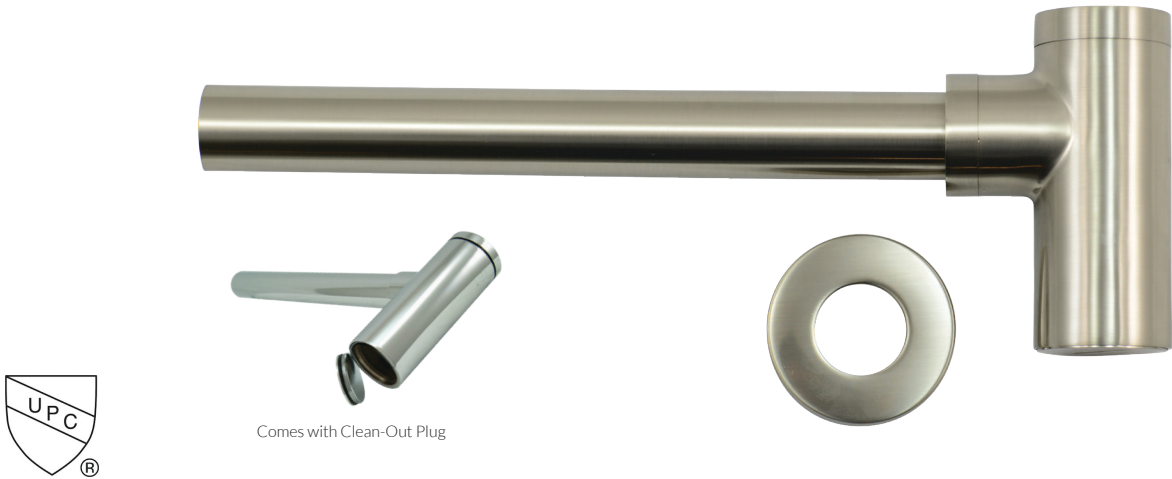
Group 1 Finishes

All Group 1 Finishes	\$ 650
----------------------	---------------

Group 2 Finishes

All Group 2 Finishes	\$ 911
----------------------	---------------

Bottle Traps



Round Style Decorative Bottle Trap with Clean-Out Plug

MT2000-2

Our round style decorative lavatory bottle trap for exposed applications.

- Fully plated drain with 17 gauge tube
- 1-1/4" x 1-1/4" trap with 11" drain tube
- Includes flange and reducer seal to attach 1-1/4" drain tube to 1-1/2" wall drain
- Drain body is 4-3/4" tall
- Patented feature eliminates long drain tubes from closing water seal

Standard Finishes

MT2000-2/BRN	Brushed Nickel	\$ 507
MT2000-2/CHBRZ	Champagne Bronze	\$ 911
MT2000-2/CPB	Polished Chrome	\$ 424
MT2000-2/MB	Matte Black	\$ 650
MT2000-2/ORB	Oil Rubbed Bronze	\$ 610
MT2000-2/PN	Polished Nickel	\$ 507
MT2000-2/ULB	Unlacquered Brass	\$ 424
MT2000-2/VB	Venetian Bronze	\$ 610

Group 1 Finishes

All Group 1 Finishes	\$ 650
----------------------	--------

Group 2 Finishes

All Group 2 Finishes	\$ 911
----------------------	--------

For Complete Lavatory Supply Kits with Bottle Trap See Pages 178 - 183

Notes:

P-Traps



1-1/4" P-Trap - Traditional Style with High Box Flange

MT3140

A traditionally styled 1-1/4" x 1-1/4" Lavatory P-Trap.

- 17 gauge brass (P-Trap)
- Includes High Box Flange

Consists of:

- 1 - MT301X 1-1/4" x 1-1/4" P-Trap
- 1 - MT314X 3" Diameter x 1-1/4" High Box Flange

Standard Finishes

MT3140/BRN	Brushed Nickel	\$ 277
MT3140/CHBRZ	Champagne Bronze	\$ 527
MT3140/CPB	Polished Chrome	\$ 213
MT3140/MB	Matte Black	\$ 405
MT3140/ORB	Oil Rubbed Bronze	\$ 358
MT3140/PN	Polished Nickel	\$ 277
MT3140/ULB	Unlacquered Brass	\$ 213
MT3140/VB	Venetian Bronze	\$ 358

Group 1 Finishes

All Group 1 Finishes

Group 2 Finishes

All Group 2 Finishes

1-1/2" P-Trap - Traditional Style with High Box Flange

MT3130

A traditionally styled 1-1/2" x 1-1/2" Lavatory P-Trap.

- 17 gauge brass (P-Trap)
- Includes High Box Flange

Consists of:

- 1 - MT302X 1-1/2" x 1-1/2" P-Trap
- 1 - MT313X 3" Diameter x 1-1/2" High Box Flange
- Includes reducing washer to fit 1-1/4" tailpiece

Standard Finishes

MT3130/BRN	Brushed Nickel	\$ 277
MT3130/CHBRZ	Champagne Bronze	\$ 527
MT3130/CPB	Polished Chrome	\$ 213
MT3130/MB	Matte Black	\$ 405
MT3130/ORB	Oil Rubbed Bronze	\$ 358
MT3130/PN	Polished Nickel	\$ 277
MT3130/ULB	Unlacquered Brass	\$ 213
MT3130/VB	Venetian Bronze	\$ 358

Group 1 Finishes

All Group 1 Finishes **\$ 405**

Group 2 Finishes

All Group 2 Finishes **\$ 527**

Notes:

P-Traps



1-1/4" P-Trap - Traditional Style - No Flange

MT301X

A traditionally styled 1-1/4" x 1-1/4" Lavatory P-Trap.

- 17 gauge brass
- Flange not included - Use High Box Flange MT314X

Standard Finishes

MT301X/BRN	Brushed Nickel	\$ 237
MT301X/CHBRZ	Champagne Bronze	\$ 431
MT301X/CPB	Polished Chrome	\$ 181
MT301X/MB	Matte Black	\$ 339
MT301X/ORB	Oil Rubbed Bronze	\$ 292
MT301X/PN	Polished Nickel	\$ 237
MT301X/ULB	Unlacquered Brass	\$ 181
MT301X/VB	Venetian Bronze	\$ 292

Group 1 Finishes

All Group 1 Finishes	\$ 339
----------------------	--------

Group 2 Finishes

All Group 2 Finishes	\$ 431
----------------------	--------

1-1/2" P-Trap - Traditional Style - No Flange

MT302X

A traditionally styled 1-1/2" x 1-1/2" Lavatory P-Trap.

- 17 gauge brass
- Flange not included - Use High Box Flange MT313X
- Includes reducing washer to fit 1-1/2" x 1-1/4" tailpiece

Standard Finishes

MT302X/BRN	Brushed Nickel	\$ 237
MT302X/CHBRZ	Champagne Bronze	\$ 431
MT302X/CPB	Polished Chrome	\$ 181
MT302X/MB	Matte Black	\$ 339
MT302X/ORB	Oil Rubbed Bronze	\$ 292
MT302X/PN	Polished Nickel	\$ 237
MT302X/ULB	Unlacquered Brass	\$ 181
MT302X/VB	Venetian Bronze	\$ 292

Group 1 Finishes

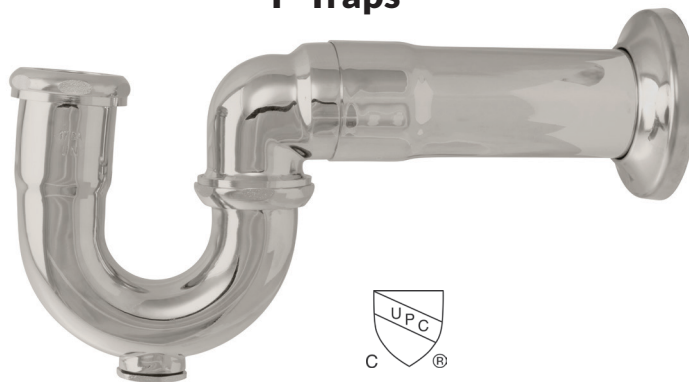
All Group 1 Finishes	\$ 339
----------------------	--------

Group 2 Finishes

All Group 2 Finishes	\$ 431
----------------------	--------

For Complete Lavatory Supply Kits with P-Trap See Pages 184 - 194

Notes:



P-Traps



1-1/2" P-Trap - Traditional Style with Clean-Out Plug

MT305X

A traditionally styled 1-1/2" x 1-1/2" Lavatory P-Trap with Clean-Out.

- 17 gauge brass
- Flange not included - Use High Box Flange MT313X
- Includes reducing washer to fit 1-1/4" tailpiece

Standard Finishes

MT305X/BRN	Brushed Nickel	\$ 292
MT305X/CHBRZ	Champagne Bronze	\$ 560
MT305X/CPB	Polished Chrome	\$ 229
MT305X/MB	Matte Black	\$ 399
MT305X/ORB	Oil Rubbed Bronze	\$ 376
MT305X/PN	Polished Nickel	\$ 292
MT305X/ULB	Unlacquered Brass	\$ 229
MT305X/VB	Venetian Bronze	\$ 376

Group 1 Finishes

All Group 1 Finishes	\$ 399
----------------------	--------

Group 2 Finishes

All Group 2 Finishes	\$ 560
----------------------	--------



1-1/2" P-Trap - Traditional Style with Clean-Out Plug & High Box Flange

MT315X

A traditionally styled 1-1/2" x 1-1/2" Lavatory P-Trap with Clean-Out.

- 17 gauge brass
- Includes High Box Flange

Consists of:

- 1 - MT305X 1-1/2" x 1-1/2" P-Trap with Clean-Out
- 1 - MT313X 3" Diameter x 1-1/2" High Box Flange
- Includes reducing washer to fit 1-1/4" tailpiece

Standard Finishes

MT315X/BRN	Brushed Nickel	\$ 330
MT315X/CHBRZ	Champagne Bronze	\$ 649
MT315X/CPB	Polished Chrome	\$ 261
MT315X/MB	Matte Black	\$ 463
MT315X/ORB	Oil Rubbed Bronze	\$ 403
MT315X/PN	Polished Nickel	\$ 330
MT315X/ULB	Unlacquered Brass	\$ 261
MT315X/VB	Venetian Bronze	\$ 403

Group 1 Finishes

All Group 1 Finishes	\$ 463
----------------------	--------

Group 2 Finishes

All Group 2 Finishes	\$ 649
----------------------	--------

1-1/4" & 1-1/2" High Box Flange

MT314X

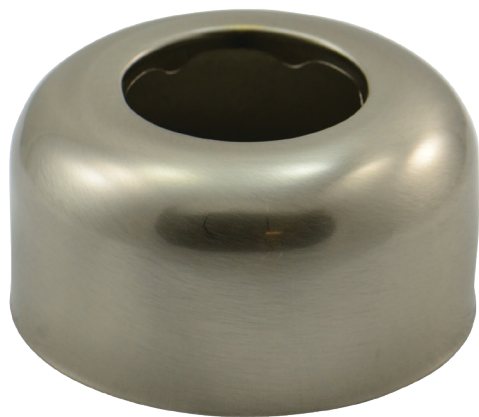
A 1-1/4" high box flange for 1-1/4" I.D. P-Traps.

- 3" O.D. x 1-1/4" I.D. x 1-3/4" HT.
- High quality plated brass, not steel
- Available in multiple finishes

MT313X

A 1-1/2" high box flange for 1-1/2" I.D. P-Traps.

- 3" O.D. x 1-1/2" I.D. x 1-3/4" HT.
- High quality plated brass, not steel
- Available in multiple finishes



Standard Finishes

MT314X/BRN	MT313X/BRN	Brushed Nickel	\$ 38
MT314X/CHBRZ	MT313X/CHBRZ	Champagne Bronze	\$ 90
MT314X/CPB	MT313X/CPB	Polished Chrome	\$ 32
MT314X/MB	MT313X/MB	Matte Black	\$ 63
MT314X/ORB	MT313X/ORB	Oil Rubbed Bronze	\$ 60
MT314X/PN	MT313X/PN	Polished Nickel	\$ 38
MT314X/ULB	MT313X/ULB	Unlacquered Brass	\$ 32
MT314X/VB	MT313X/VB	Venetian Bronze	\$ 60

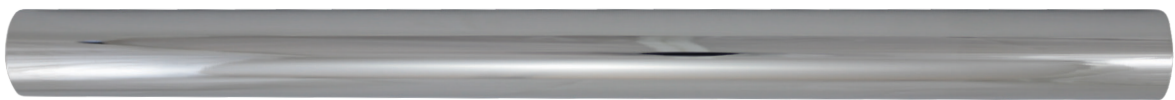
Group 1 Finishes

All Group 1 Finishes **\$63**

Group 2 Finishes

All Group 2 Finishes **\$ 90**

Notes:



Waste Pipe for Deluxe, Round, & Square Bottle Traps

MT406

This 1-1/4" O.D. x 16" long waste arm is designed for the deluxe, round, and square bottle traps. Use when the standard supplied waste arm is too short for your application.

- 17 gauge brass
- Flange not included
- Use with lavatory trap model numbers MT1000, MT2000-2, and MT3000

Standard Finishes

MT406/BRN	Brushed Nickel	\$ 183
MT406/CHBRZ	Champagne Bronze	\$ 326
MT406/CPB	Polished Chrome	\$ 106
MT406/MB	Matte Black	\$ 230
MT406/ORB	Oil Rubbed Bronze	\$ 207
MT406/PN	Polished Nickel	\$ 183
MT406/ULB	Unlacquered Brass	\$ 106
MT406/VB	Venetian Bronze	\$ 207

Group 1 Finishes

All Group 1 Finishes	\$ 230
----------------------	--------

Group 2 Finishes

All Group 2 Finishes	\$ 326
----------------------	--------



Space Saving Trap for Lavatory Sinks

MTSSTLAV **\$34**

- By raising the tailpiece and redirecting the P-Trap to the back of the cabinet, you ensure maximum storage space.
- Kit includes everything needed to hook up a lavatory sink.

